



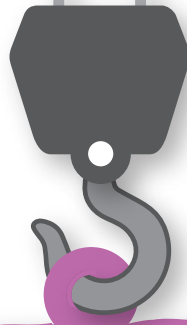
*Phil's Crane Hire Pty Ltd. ABN 90 105 040 926*

*28 Laurina Court, Elanora QLD 4221*

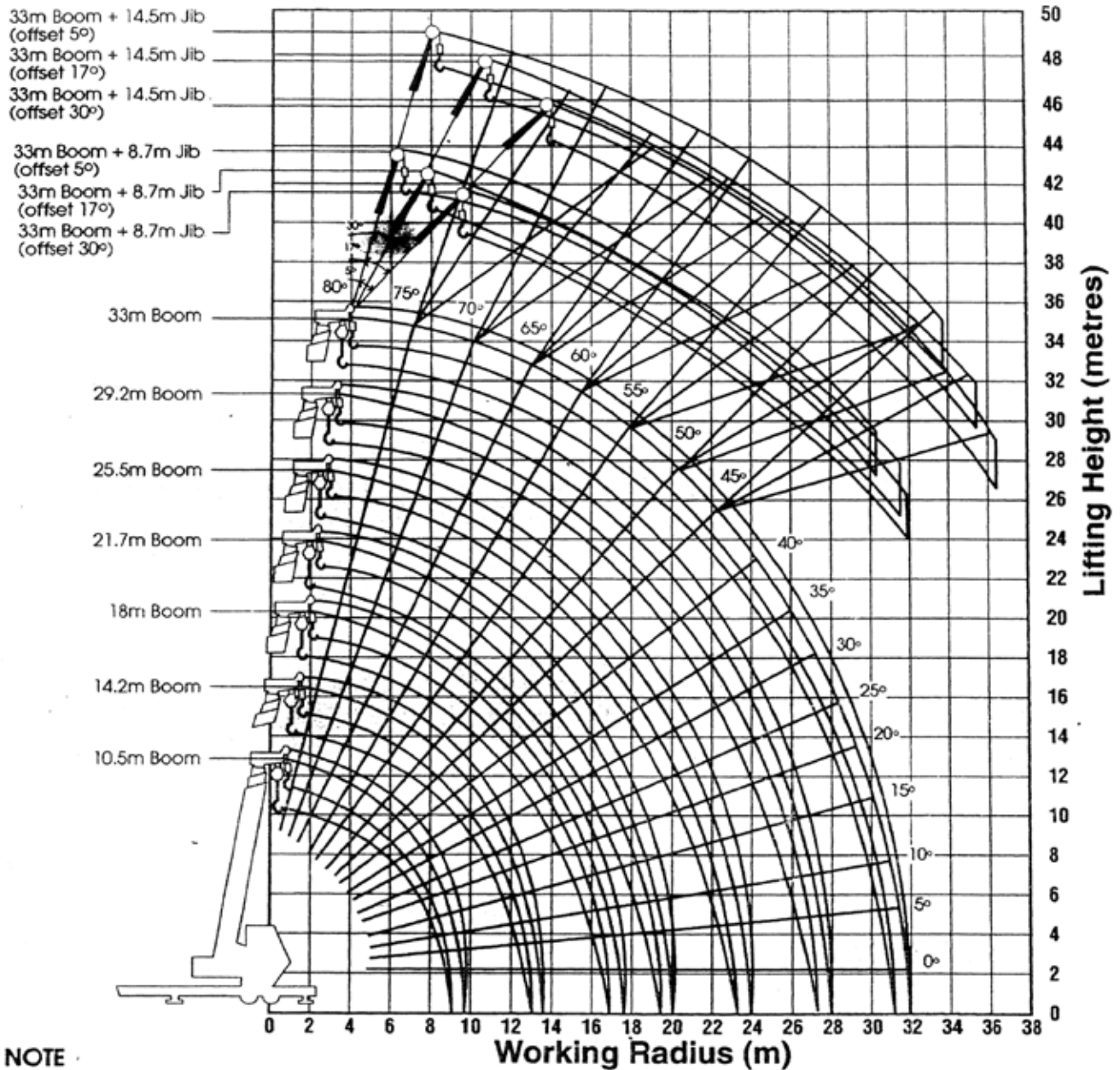
*Mobile: 0408 767 477*

*Fax: 07 5534 8622*

*Email: [philcrane@bigpond.net.au](mailto:philcrane@bigpond.net.au)*



**KATO 30T**



## NOTE

1. The above lifting heights are boom angles are based on a straight (unladen) boom, and allowance should be made for boom deflection obtained under laden conditions.
2. The diagram is shown as with the outriggers fully extended.

## TOTAL RATED LOAD IN KILOGRAMS

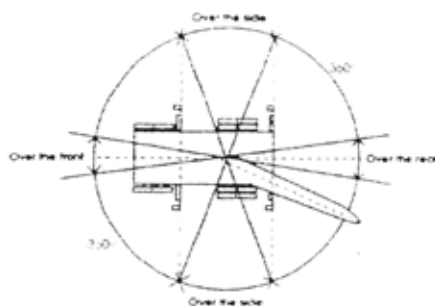
### THIS DOCUMENT SHOULD BE READ IN CONJUNCTION WITH THE A.C.S

#### OUTRIGGERS FULLY EXTENDED WITH FRONT JACK DOWN (360°)

#### OUTRIGGERS AT MEDIUM EXTENSION WITH THE FRONT JACK DOWN (OVER THE FRONT AND REAR)

B(m)	10.5m	14.2m	18m	21.7m	25.5m	29.2m	33m
2.5	25,000	20,000	16,000				
3.0	25,000	20,000	16,000				
3.5	25,000	20,000	16,000	12,000			
4.0	22,900	20,000	16,000	12,000	11,500		
4.5	21,000	20,000	16,000	12,000	11,500		
5.0	19,400	18,400	16,000	12,000	11,500	9,000	
6.0	16,200	15,300	13,700	12,000	11,500	9,000	7,000
7.0	13,700	12,650	11,950	11,000	10,000	9,000	7,000
8.0	11,500	10,650	10,550	10,200	8,900	8,200	7,000
8.8	9,500	9,300	9,200	9,400	8,250	7,600	6,400
9.0		9,050	8,800	9,200	8,050	7,450	6,400
10.0		7,400	7,200	7,700	7,300	6,750	6,250
12.0		5,150	5,000	5,450	5,750	5,650	5,700
12.5		4,700	4,600	5,000	5,300	5,450	4,800
13.0			4,250	4,650	4,900	5,050	4,550
14.0			3,600	4,000	4,250	4,450	4,450
16.0			2,550	3,000	3,250	3,400	4,100
16.3			2,400	2,850	3,100	3,250	3,500
18.0				2,200	2,500	2,700	3,400
20.0				1,550	1,850	2,050	2,800
22.0					1,350	1,550	2,200
23.8					950	1,200	1,700
26.0						800	1,350
27.5						600	950
29.0							750
30.0							550
							450

#### A: BOOM LENGTH B: WORKING RADIUS (m)



Working Radius Diagram

See above chart  
271-75025001

1.0 These capacities are based on condition that the crane is set on firm ground horizontally. Those above bold lines are based on crane strength and those below on stability.

2.0 Total rated loads below bold lines do not exceed 75% of tipping load.

3.0 The total rated loads shown are based on the actual working radius which includes and deflection of the boom

4.0 Boom operations must be related to the working radius. However the working radius shown for jib operations are based upon the values obtained when the boom is fully extended (33m). Jib operations should be performed on the basis of boom angle or regardless of boom length

5.0 If the boom length exceeds the specified value, refer to the rated lifting capacities for the boom length and the next highest boom length. The crane should be operated within the smaller lifting capacity.

6.0 The boom angle must not be reduced to less than the number of degrees shown as the critical boom angle at the bottom of each load chart. In the vent of such a reduction the crane will tip.

7.0 The weight of the hook (280kg for 25,000kg capacity, 60kg for 3,400kg capacity), slings and all similarly used load handling devices must be added to the weight of the load.

8.0 Standard number of part lines for each boom length are as shown below. Load per line should not surpass 3.125kg

9.0 Total rated load of the single top should not exceed 3,400kg

10.0 Free fall operation should be performed only without any load on the hook.

11.0 Deduct 1,800kg from the rated lifting loads of the main boom, when the jib is attached to the main boom head. The single top must not be used whilst the jib is attached.

12.0 Over the front lifting performance is inferior to over the sides/over the rear lifting performance. Great care must be taken when transferring loads from over the side to over the front since there is a distinct danger of overloading.

13.0 The cranes safe lifting ability over the sides will vary due to the amount the outriggers are extended. Refer to the rated load chart for each respective outrigger configuration. When the front jack is down and the outriggers are set at their minimum extension the stability of the crane is the same as if the front jack was not in use.

14.0 Special weather caution: Should wind gusts exceed 10m/sec postpone the operation. Refer to the operation and maintenance manual

15.0 Refer to the crane manual

## TOTAL RATED LOAD IN KILOGRAMS

THIS DOCUMENT SHOULD BE READ IN CONJUNCTION WITH THE A.C.S

### OUTRIGGERS FULLY EXTENDED (OVER THE SIDE) OUTRIGGERS FULLY EXTENDED OR AT MEDIUM (4.1M) EXTENSION WITH FRONT JACK DOWN (OVER THE FRONT)

TABLE A	33m BOOM + 8.7 JIB					
	5° OFFSET		17° OFFSET		30° OFFSET	
BOOM ANGLE	A (m)	B (kg)	A (m)	B (kg)	A (m)	B (kg)
80	8.0	3,000	9.6	2,200	11.3	1,600
76.5	11.0	3,000	12.5	2,200	14.0	1,600
74	12.9	2,640	14.3	2,020	15.8	1,520
70	15.5	2,230	16.9	1,760	18.3	1,430
66	18.1	1,910	19.5	1,540	20.7	1,290
62	20.6	1,670	22.0	1,370	23.0	1,170
58.5	22.8	1,480	24.2	1,230	25.3	1,050
56.5	23.9	1,280	25.2	1,180	26.2	1,020
55.5	24.5	1,160	25.7	1,080	26.8	980
50	27.3	700	28.4	650	29.3	600
46	29.3	440	30.3	390	31.1	360
44	30.2	320	31.2	280	31.8	280
CRITICAL BOOM ANGLE	41°					

TABLE B	33m BOOM + 14.5 JIB					
	5° OFFSET		17° OFFSET		30° OFFSET	
BOOM ANGLE	A (m)	B (kg)	A (m)	B (kg)	A (m)	B (kg)
80	9.9	2,000	12.5	1,300	15.1	900
78.2	12.0	2,000	14.5	1,300	17.2	900
77	13.1	1,840	15.5	1,250	18.0	900
72	17.0	1,410	19.3	1,040	21.6	830
68	19.9	1,170	22.2	900	24.3	730
64	22.8	1,010	25.0	780	26.9	660
60	25.4	900	27.7	690	29.4	590
56	28.1	760	30.4	630	31.7	550
52.5	30.5	660	32.4	570	33.7	520
51.5	31.1	580	32.9	550	34.2	510
47	33.6	330	35.1	310	36.3	290
CRITICAL BOOM ANGLE	44°					

#### A: Working Radius (m)

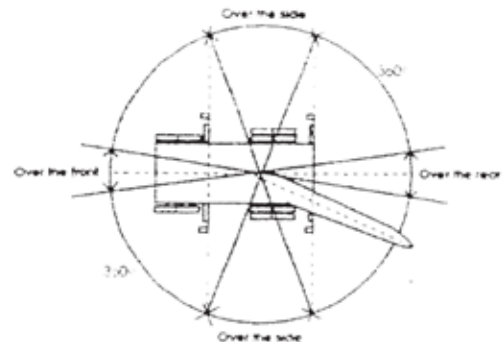
##### NOTES

- These capacities are based on condition that the crane is set on firm ground horizontally. Those above bold lines are based on crane strength and those below, on it's stability
- Total rated loads below bold lines do not exceed 75% of tipping load.
- The total rated loads shown are based on the actual working radius which includes any deflection of the boom.
- Boom operations must be related to the working radius. However the working radii shown for jib operations are based upon the values obtained when the boom is fully extended (33m). Jib operations should be performed on the basis of boom angle only, regardless of boom length.
- If the boom length exceeds the specified value, refer to the rated lifting capabilities for the boom length and the next highest boom length. The crane should be operated within the smaller lifting capacity
- The boom angle must not be reduced to less than the number of degrees shown as the critical boom angle at the bottom of each load chart. In the vent of such a reduction the crane will tip.
- The weight of the hook (280kg for 25,000kg capacity, 60kg for 3,400kg capacity), slings and all similarly used load handling devices must be added to the weight of the load.
- Standard number of part lines for each boom length are as shown below. Load per line should not surpass 3,125kg.

BOOM LENGTH	10.5m	14.2m	18.0m	21.7m	25.5m	29.2m	33.0m	Both Jibs	Single Top
No. of Part Lines	8	8	8	4	4	4	4	1	1

- Total load of the single top should not exceed 3,400kg.
- Free fall operation should be performed only without any load on the hook.
- Deduct 1,800kg from the rated lifting loads of the main boom, when the jib is attached to the main boom head. The single top must not be used whilst the jib is attached.

#### B: Permitted Load (kg)



Working Radius Diagram

See above chart  
271-75025001

- Over the front lifting performance is inferior to over the sides/ over the rear lifting performance. Great care must be taken when transferring loads from over the side to over the front since there is a distinct danger of overloading.
- The cranes safe lifting ability over the sides will vary due to the amount of outriggers, are extended. Refer to the rated load chart for each respective outrigger configuration. When the front jack is down and the outriggers are set to their minimum extension the stability of the crane is the same as if the front jack was not in use.
- Special weather caution: Should wind gusts exceed 10m/sec postpone the operations. Refer to the operation and maintenance manual.
- Refer to the crane manual

